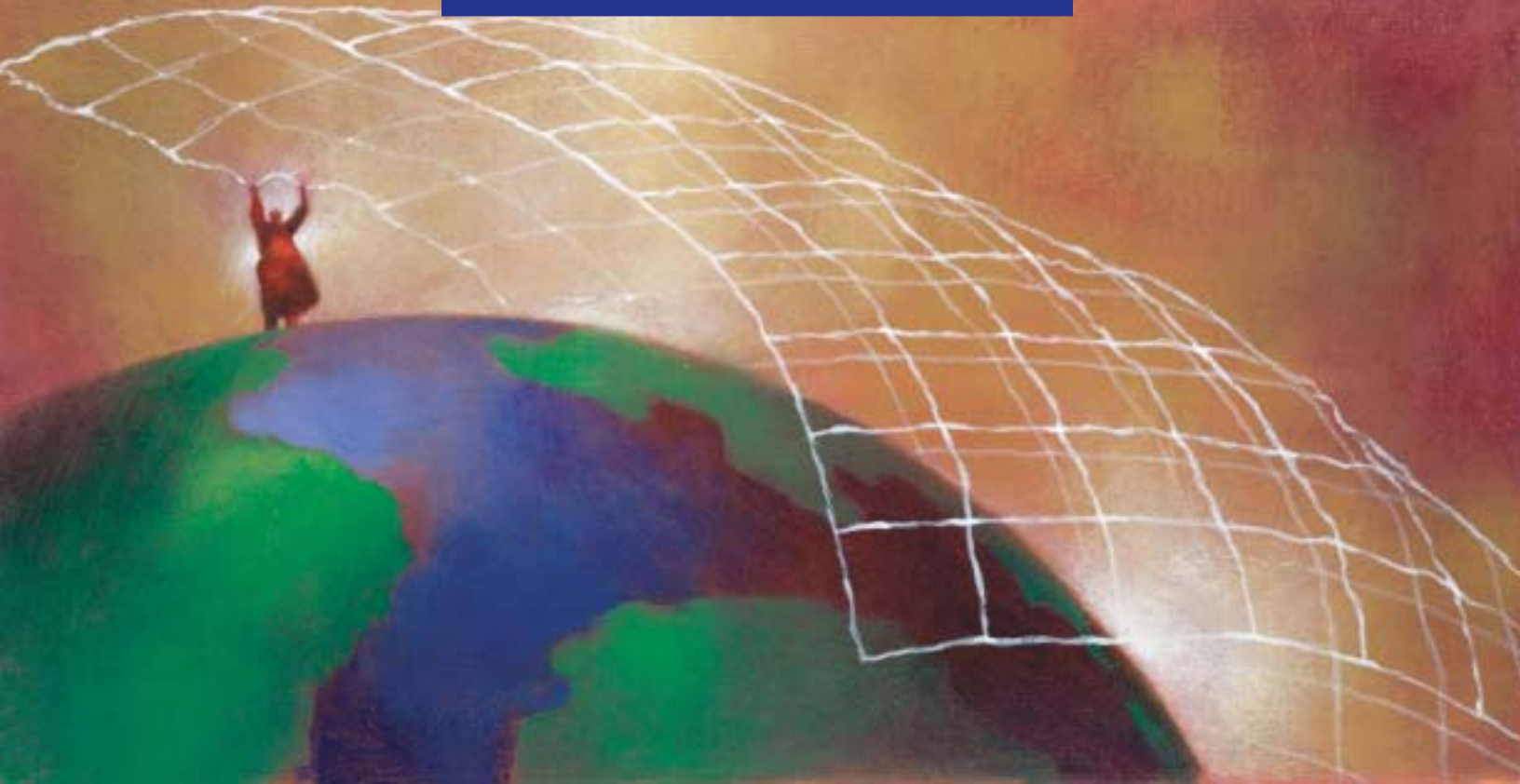


C A C H É   C O M P O N E N T S

C A C H É   &   . N E T



One of the hallmarks of the Caché database and development environment is its openness and easy integration with other technologies. Developers who wish to work in the .NET framework will find that Caché fits in seamlessly, providing outstanding performance and scalability to their .NET applications.

# C A C H É C O M P O N E N T S

## C A C H É & . N E T



.NET is a new application development and runtime environment from Microsoft. Touted as an extremely open environment, .NET holds the promise to facilitate application integration, use of Web services, and database independence.

Because of its open and flexible data access, Caché works seamlessly with .NET. There are many ways of connecting Caché to a .NET client. The only difference is whether the Caché data is accessed via objects, SQL, XML, or SOAP. Developers can create applications with the technologies they prefer – all of them will benefit from Caché's superior performance and scalability.

### **.NET – Compatible Application Development Technologies**

#### ■ **COM & ADO**

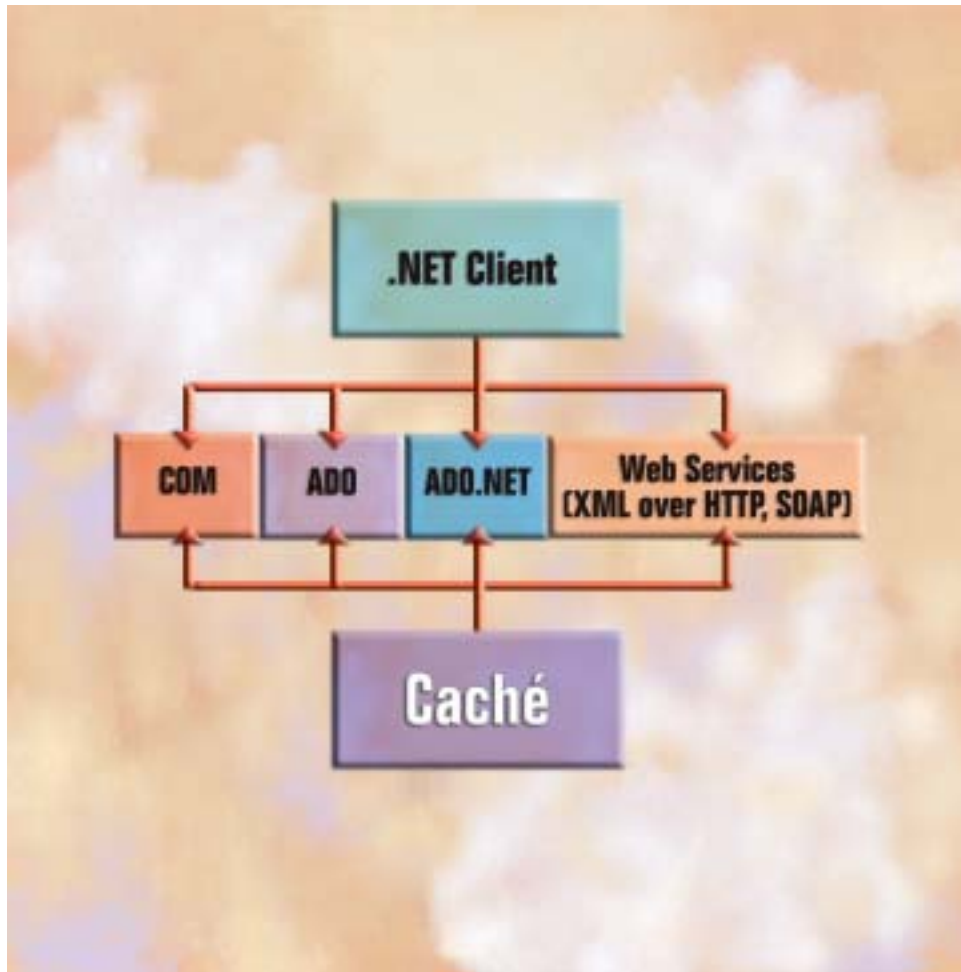
COM and ADO are both considered "older" Microsoft technologies, included in .NET to encourage migration to the newer framework. Caché interacts with COM through its object data access – exposing Caché classes as COM classes. In contrast, ADO provides object "wrappers" for relational data, and interacts with Caché via Caché's relational data access.

#### ■ **ADO.NET**

ADO.NET is a new incarnation of ADO, optimized for use in the .NET framework. It is intended to make .NET applications "database independent". Like ADO, it uses Caché's relational data access to interact with Caché.

#### ■ **Web Services**

There are two ways of using Web Services in .NET. One is to send XML documents over HTTP. The other is to use the SOAP protocol to simplify the exchange of XML documents. In both cases, because Caché can expose data as either XML or SOAP documents, it works seamlessly with .NET Web Services.



### Giving Developers Options

Developers of .NET applications who wish to take advantage of Caché's high performance and massive scalability have their choice of development technologies.

**InterSystems Corporation**  
World Headquarters  
One Memorial Drive  
Cambridge, MA 02142  
Tel: 1.617.621.0600  
Fax: 1.617.494.1631

**[www.InterSystems.com](http://www.InterSystems.com)**

